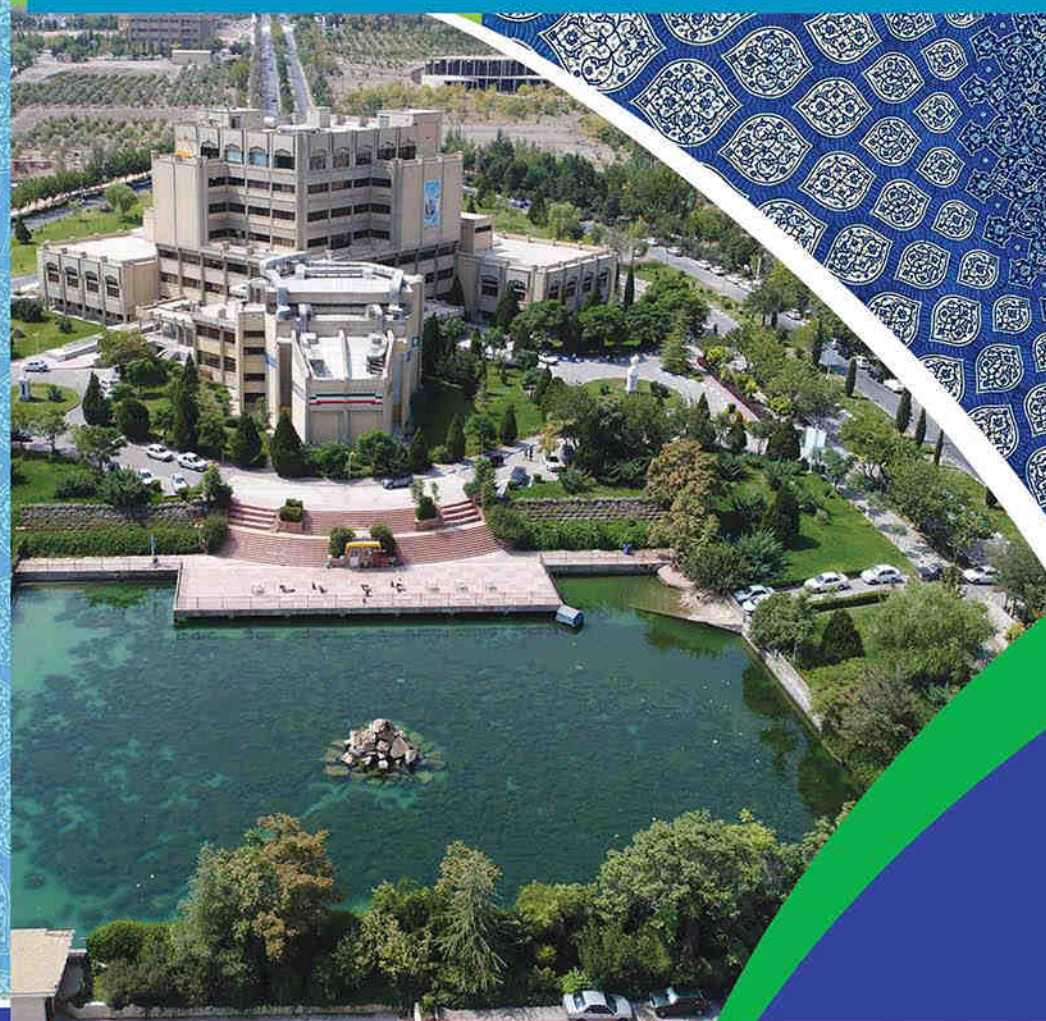
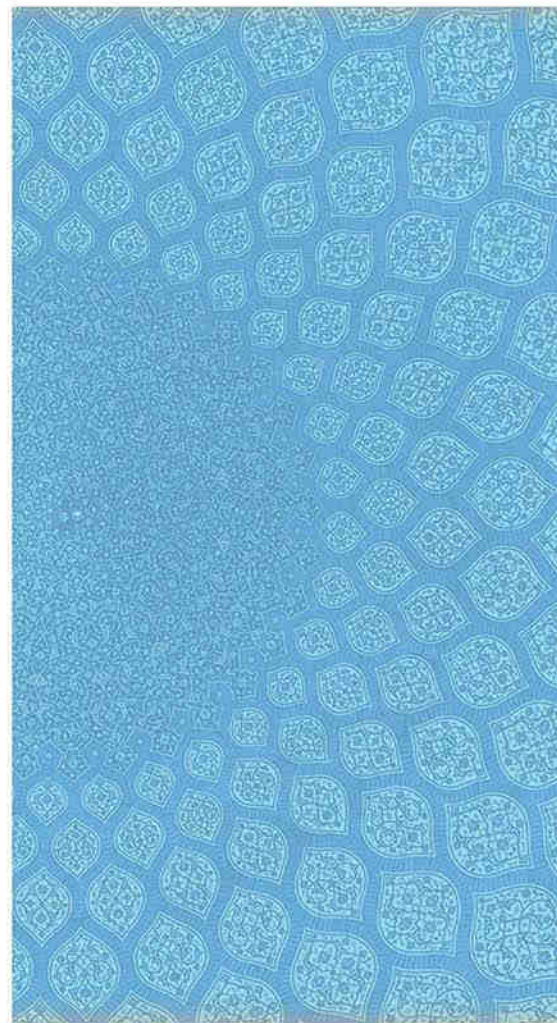




For any inquiry in international affairs, please contact the ISCO via the following address:  
International Scientific Cooperation Office (ISCO),  
University of Isfahan,  
Hezar-jarib Ave., Isfahan, Iran  
Tel: +98 31 37932039-41  
Fax: +98 31 36682910  
Email: [int-office@ui.ac.ir](mailto:int-office@ui.ac.ir), [director.isco@dean.ui.ac.ir](mailto:director.isco@dean.ui.ac.ir)  
Website: [www.ui.ac.ir/int-office](http://www.ui.ac.ir/int-office)



University of Isfahan  
1946





## University of Isfahan 1946

The University of Isfahan is one of the leading universities in Iran, which is a public comprehensive university comprising all fields of research and inquiry including science, engineering, social sciences, and humanities and is nationally recognized for exceptional programs that prepare its diverse student body for academic and professional success. All of its premises are concentrated in the heart of the city of Isfahan, which is historically recognized as 'half of the world' for its beauty and historical heritage. The university has more than 15,000 students enrolled and about 650 full time and about 1000 part time faculty members.

The University of Isfahan is one of the top ten universities in Iran with a good position in both national and international university rankings. It has also a high international profile and is committed to academic and research excellence with a general reputation for high quality research and education and the development of academic disciplines.

The seven faculties of the University of Isfahan cover most of the international and modern university disciplines.

Within these faculties are included 45 different specialized departments. There are also an increasing number of multi-disciplinary research centers, projects, and units. The University of Isfahan also accepts international students from different countries. They are offered bachelors, master, and doctoral-level training at the University of Isfahan. Additionally, the International Center of Teaching Persian to Speakers of Other Languages at the University of Isfahan accepts Persian learners from around the world including Germany.

The University of Isfahan is constantly interfacing with the international environment in order to expand its borders and to explore the world. It has the policy of internationalization and is heavily involved in international cooperation in research and education. The university has signed many bilateral agreements with universities, research institutions, and academic centers of excellence from all parts of the world including Europe. The cooperation with our global partners has been in different areas of common interest including joint research and educational programs, exchange and mobility of faculty members and students, Erasmus ICM projects, joint supervision of postgraduate thesis and dissertations, and co-tutelle and dual degree programs.





## Faculties

### Faculty of Administrative Sciences and Economics

The Faculty of Administrative Sciences and Economics started its activities with three departments of Economics, Management and Accounting in 1977. The Department of Political Sciences and the Department of Law were launched in this faculty in 1990 and 2001 respectively. Currently, this faculty consists of 5 departments of Economics, Management, Accounting, Political Sciences and Law. In addition to BA and MA programs, the Departments of Economics, Management, and Political Sciences offer PhD programs as well. Currently, there are more than 2900 students at this faculty that can draw on the expertise of over 80 faculty members

**Website:** <http://ase.ui.ac.ir>



### Faculty of Ahl-al-Bayt

The Faculty of Ahl Al-Bayt was established in 2011 with a focus on introducing and developing Islamic knowledge and understanding and developing the role of Islamic heritage and vision in considering and analyzing different branches of science especially Humanities. This faculty includes three Departments of Quran and Ahl Al-Bayt Knowledge Studies, Islamic Culture and Civilizations, and Women's Studies. The departments offer programs at BA, MA, and PhD levels. The faculty is equipped with a modern library and a computer lab.

**Website:** <http://ahl.ui.ac.ir>



### Faculty of Chemistry

Faculty of Chemistry was launched in 2012, and currently benefiting from more than 30 faculty members. The faculty includes 6 Departments of Organic Chemistry, Analytical Chemistry, Inorganic Chemistry, Physical Chemistry, Polymer Chemistry, and Educational Environment, where students can draw on the knowledge and experience of more than 30 faculty members. The faculty enjoys from hi-tech laboratories and apparatuses as well as numerous research centers and is nationally renowned for its facilities and high quality research and education.

**Website:** <http://chem.ui.ac.ir>



### Faculty of Civil Engineering and Transportation

The Department of Railway Engineering launched at the Faculty of Engineering in 2008 was developed into a faculty in 2011, named as the Faculty of Civil Engineering and Transportation. This young faculty offers BSc and MSc programs in Railway Engineering and Transportation Planning. The faculty includes the three Departments of Civil Engineering, Surveying Engineering, and Transportation Engineering.

**Website:** <http://trn.ui.ac.ir>



## Faculty of Computer Sciences

The Faculty of Computer Science was established in 1988 by offering two BSc programs in Computer Engineering (Software) and Computer Engineering (Hardware). Now, the faculty includes the four departments of Information Technology Engineering, Computer Architecture Engineering, Software Engineering, and Artificial Intelligence Engineering. Currently, over 850 students pursue their education and enjoy the expertise of more than 30 faculty members. This faculty, similar to other faculties of the University of Isfahan, sends its PhD students to internationally renowned universities for a research leave.

**Website:** <http://comp.ui.ac.ir>



## Faculty of Engineering

The Department of Engineering was established in 1988 and offered three BSc programs in Software Engineering, Hardware Engineering, and Civil Engineering. The Department of Computer Engineering and Information Technology developed into the Faculty of Engineering in 2013, which now includes the six Departments of Biomedical Engineering, Chemical Engineering, Electrical Engineering, Mechanical Engineering, and Surveying Engineering. Most of the departments at this offer programs at PhD, MSc, and BSc levels. This facilities draws on the expertise of over 90 faculty members and benefits from 30 well-equipped educational-research laboratories, two educational workshops, and two computer centers.

**Website:** <http://eng.ui.ac.ir>





### Faculty of Foreign Languages

The Faculty of Foreign Languages, one of the oldest faculties at the University of Isfahan, was established in 1974. The Faculty comprises the Departments of English Language and Literature, Arabic Language and Literature, French Language and Literature, German Language and Literature, Armenian Studies, Chinese, and Linguistics. The Department of English Language and Literature, which is the oldest department of the faculty, was established in 1958 and the Departments of French Language and Literature, Armenian Studies, Arabic Language and Literature, German Language and Literature and Linguistics were founded in 1959, 1960, 1962, 1994 and 2006 respectively. This faculty offers various programs at BA, MA, and PhD levels and draws on the knowledge and expertise of over 50 faculty members. This faculty is also nationally renowned for its high quality research and education.

**Website:** <http://fgn.ui.ac.ir>



### Faculty of Geographical Sciences and Planning

The Faculty of Geographical Sciences and Planning was first launched as the Department of Geography in 1966. This faculty was later renamed to the Faculty of Geographical Sciences and Planning in 2010. Currently, this faculty comprises the Departments of Geography and Rural Planning, Geography and Urban Planning, and Physical Geography. There are now more than 650 students at BA, M.A, and PhD levels who can draw on the expertise of over 22 faculty members in five sub-disciplines of Urban Planning, Rural Planning, Climatology, Geomorphology, and Geography and Tourism Planning. This faculty is equipped with soil and water laboratory, cartography hall, Geographical Information Systems (GIS), urban planning workshop, Center of Excellence on Geography, and the Research Institute of Geography.

**Website:** <http://geo.ui.ac.ir>



### Faculty of Literature and Humanities

The Faculty of Literature and Humanities, one of the oldest faculties at the University of Isfahan, was launched in 1959. This faculty consists of seven departments of Persian Language and Literature, Quran and Hadith, History, Islamic Philosophy and Kalam, Philosophy, Social Sciences, and Islamic Teachings. There are more than 3000 students at BA, MA, and PhD levels in more than 24 sub-disciplines who can draw on the knowledge and expertise of over 97 full-time faculty members and 100 part-time lecturers. This faculty is renowned for its high quality research and education and for meeting the personal, developmental, and educational needs of its diverse student body.

**Website:** <http://ltr.ui.ac.ir>



### Faculty of Advanced Sciences and Technologies

Faculty of Advanced Sciences and Technologies was established in 2008 and started its activities with the four Departments of Biotechnology Engineering, Energy Engineering, Science and Technology, Strategy Engineering, and Nanotechnology Engineering. This faculty has 22 faculty members and offers 7 MSc and 2 PhD programs. Additionally, the faculty plans to establish the departments of Intelligent Systems Engineering, Technologies in Earth Sciences, and Renewable Energy Engineering. This faculty is equipped with advanced facilities and laboratories.

**Website:** <http://ast.ui.ac.ir>



### Faculty of Education and Psychology

As one of the oldest faculties, the Faculty of Education and Psychology was established in 1969. It consists of five Departments of Counseling, Educational Sciences, Knowledge and Information Sciences, Psychology, and Psychology of Exceptional Children. All the departments offer graduate and postgraduate programs and draws on the expertise of more than 50 faculty members. The Department of Educational Sciences is the oldest at this faculty. In addition to the programs at B.A, M.A and PhD levels, the faculty offers summer/winter schools and short-term and medium-term courses for the staff of the Department of Education in Isfahan Province. The faculty members also conduct research projects. Additionally, the faculty is planning to develop interdisciplinary courses on Cognitive Sciences.

**Website:** <http://edu.ui.ac.ir>



### Faculty of Science

The Faculty of Science was established in 1964. It comprises the departments of Statistics, Mathematics, Physics, Biology, and Geology, which offer both graduate and postgraduate programs. As the biggest faculty, the Faculty of Science has 120 full time faculty members and has the reputation of being one of the distinguished scientific centers of excellence in Iran, which benefits from the experience and expertise of globally recognized academic members and modern research and laboratory facilities. The faculty is also ranked as the country's top 10 centers in the domain of Basic Sciences.

**Website:** <http://sci.ui.ac.ir>



## Faculty of Sport Sciences

The Faculty of Sport Sciences was established in 1975, and now consists of three departments of Sport Physiology, Sport Injuries and Corrective Exercises, and Motor Behavior and Sport Management as well as the Center for General Physical Education. This faculty draws on the expertise of 20 faculty members and offers both graduate and postgraduate programs. The faculty offers MA programs in the six sub-disciplines of Sport Physiology (Pure and Clinical), Pathology and Corrective Exercises, Motor Behavior, Sport Management, Sport Biomechanics, and Sport Psychology and four PhD programs.

**Website:** <http://spr.ui.ac.ir>



## Research Centers

The University of Isfahan is committed to conduct pioneering research in various disciplines including humanities, social sciences, natural sciences, engineering, and technology, and a number of research centers, institutes, and research groups do high quality research in different areas including industrial and organizational psychology, transport and traffic, economic and management issues, natural bio-pharmaceutical products, prescription research and correcting texts, family in Islamic society, operations research, processing and intelligent systems, and process engineering.

### Centers of Excellence

Seven centers of excellence, accredited by the Ministry of Science, Research, and Technology (MSRT), are now fruitfully active at the University of Isfahan. These centers include:

- Center of Excellence for Geography and Urban-Regional Planning
- Center of Excellence for Environmental Pollutants
- Center of Excellence for Psychology of Spirituality and Happiness
- Center of Excellence for International Economics
- Center of Excellence for Banach Algebra
- Center of Excellence for Research on Philosophical and Mystical Texts
- Center of Excellence for Plant Stress





## The Academic System

The University of Isfahan provides a wide variety of choices in educational programs and services. Its commitment to quality in education is reflected in the excellence of the faculty, academic programs and facilities. The university offers the programs of bachelor, master and Doctor of Philosophy (PhD). All applicants for these must take the General Entrance Exam. Applicants for PhD programs take an extra oral exam given by the university as well. Additionally, international students are considered separately under specific regulations conducted by the International Student Admissions Office of the University. Courses at the University of Isfahan are taught in Farsi at the undergraduate level. Some faculties have started presenting courses in English within their international programs. As a preliminary to degree level study, foreign students may study Farsi at the university's International Center of Teaching Persian (Farsi) to Speakers of Other Languages.

## Facilities

The university offers many facilities to students in the various faculties, including computer centers, laboratories, libraries, and information and audio-visual centers, etc. It also provides many students recreational facilities located at different sites of the campus including Physical Education Centre and Sports Facilities, Health Services Center, Islamic Education Center, auditoriums, cafeterias, restaurants, student dormitories, the hotel, day care centers and the post office and Internet service. The university also has a large Central Library with books in Farsi and a variety of other languages. The Central Laboratory, which was established in 1993, plays an important role in analyzing scientific subjects and includes analytical chemistry equipments, materials analysis equipments, Nanotechnology instruments, Spectrometry devices and Chromatography devices.

The University of Isfahan owns several dormitories and a pleasant guest house where foreign lecturers, researchers, and visitors are accommodated. The majority of students are also provided with accommodation services in different dormitories. There are a number of dormitories at the university campus which have been assigned to male and female students separately. Each dormitory has a study room,

kitchen, bathrooms and restroom. An occupant is allocated a bed, a table, a bookshelf and drawers. In addition, there are public services in the vicinity of the dormitories, such as a supermarket, bakery, tailor shop, dry cleaner, cobbler, a self-service dining hall, cinema, video club, sports complexes for men and for women, weight training room, chess room, football pitch, basketball court and skating rink, library and internet cafe, English language learning rooms, computing and music halls. There is also a special building allocated to the international students of this university that allows them to enjoy each other's cultural wealth and share their experience of living in the country of rich culture and civilization.

A comprehensive health service is provided by the university hospital, which is located on the university campus. This hospital is one of the biggest in the Middle East. It is equipped with the most up-to-date facilities. There are also some locations at the Campuses for emergency health checks. There are different location for having meals including student self services that are subsidized by the university and an excellent restaurant in a beautiful environment with reasonable prices in the guesthouse. Several small cafeterias provide cold meals, fast food and soft drinks.

Besides attending regular academic courses, students are encouraged to participate in various cultural and sport activities offered by the university. The university is proud of having facilities for such activities. Multipurpose indoor sports center, with a major hall marked for volleyball, basketball, badminton, and tennis, an indoor swimming pool. Initiative for participation lies with the student.

University of Isfahan is unique in several artistic and architectural masterpieces, one of which is the Central Mosque of the University. The magnificent looking ceiling of the mosque is designed with some beautiful arabesque traces and names of God. The construction process of the mosque started in 1995 and ended in 2003. The building of the mosque, which is called Mosalla-e-Alghadir, is composed of the mosque and specified rooms for different cultural, political, and religious activities.





## International Relations and Activities

The University of Isfahan has the strategy of internationalization and has tried to forge academic cooperation with universities and research and academic institutions around the world for more than sixty years and has signed agreements and Memorandums of Understanding with many institutions among which University of Freiburg and University of Cologne (Germany); University of Strasbourg (France); La Trobe University (Australia); Tokyo University of Foreign Studies (Japan); Xiamen University, Sun Yat Sen University, and Guangdong University of Foreign Studies (China); Seoul National University and Keimyung (South Korea); and Southern Federal University and Herzen University (Russia) are our key partners.

The international activities and cooperation are usually arranged by the International Scientific Cooperation Office (ISCO). International activities of the University of Isfahan have mostly been in the form of:

- Academic visits to the University of Isfahan by international scholars and vice versa,
- Joint seminars, workshops, and conferences,
- Exchange of academic members, students, and resources,
- Joint research projects,
- Joint postgraduate students and co-tutelle programs,
- Joint and dual degree educational programs,
- Joint teaching of undergraduate and postgraduate courses,
- Erasmus + and European Commission projects.

The University of Isfahan welcomes international students, scholars, and researchers from around the world to visit the University of Isfahan and Isfahan's historical monuments and natural attractions and is ready to start collaborations with all academic and research centers globally.

Additionally, located in the most beautiful part of the University of Isfahan, the International Center of Teaching Persian to Speakers of Other Languages offers international students the opportunity to visit Isfahan, where they can learn Persian (Farsi) with the help of native and experienced instructors and to get familiar with the Iranian rich history, literature, and culture and visit historical and natural attractions of Iran and Isfahan.





### **University of Isfahan as the Focal Point to Iran – Korea International Scientific Collaboration**

Having regards to University of Isfahan's broad cooperation with South Korean universities and scientific centers, the Center for International Scientific Cooperation of the Iranian Ministry of Science, Research, and Technology (MSRT) introduced University of Isfahan as South Korea Focal Point to other Iranian universities. To this way, University of Isfahan has been assigned the responsibility of introducing the activities of Korean universities and higher education and research centers, including educational and research opportunities, to the Iranian academic community. In line with this mission, University of Isfahan works toward arranging the visit plans of delegates from South Korea to interested Iranian universities and scientific centers and announcing the scheduled visits.

